

# NAV VIDEO

.COM

**IMPORTANT NOTE:**

**Technical support** on this product is only available via e-mail. Before submitting a technical support e-mail please thoroughly read through this installation guide and double check your installation.

If you have a technical question please send an e-mail to [support@navvideo.com](mailto:support@navvideo.com). Technical support e-mails will be returned within 2 business days.



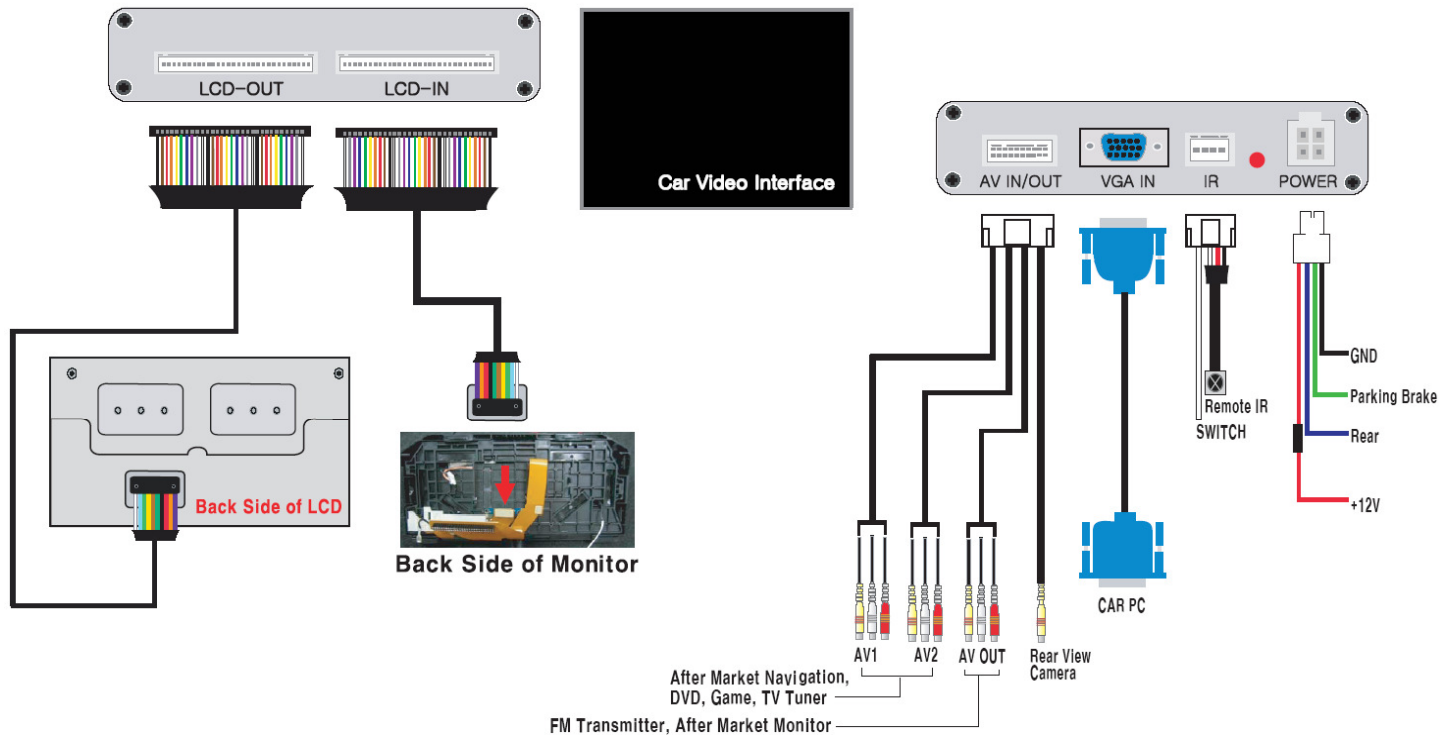
## NV\_BMW7

Video Input Module For BMW E65 7 Series

**Warning**

1. Before working, please make sure the vehicle power is off (please keep in mind when pulling out the key, only monitor supply would be off but whole vehicle power supply would be off 5 minutes later).
2. Starting with separating of the monitor and the connector removed in working may causes an error code. Do not start until the work is done.
3. Please use appropriate measure of tools
4. Do not force excessively in assembling or disassembling, tightening or pulling
5. Using protecting clothes or taping around the working area, take care of scars
6. Please make sure to connect the power cable using a fuse when you use it with pulling out the power supply.

**System Connection Diagram**



\*\*\*  
 When shifting into Reverse (Rearview Camera Input) will be displayed automatically on LCD screen when present.  
 no Rearview Camera present automatically change to Main Screen.

LCD OUT	This connector is what attaches the module to the circuit board installed behind the radio. A ribbon cable from this port connects to the circuit board supplied. On this circuit board, the BMW OEM navigation connector will then connect to the "LCD IN" and then the connector supplied with the kit will plug into the "LCD OUT" on the board as well as the back of the BMW radio where the OEM connector used to be plugged into.
SWITCH	When this wire is attached to a momentary switch, attached to ground, it will cycle through each video input.
AV1 IN	Composite Video & Audio Input For Any Video Device (only video will go into the OEM navigation / multimedia system, audio is only for output switching)
AV2 IN	Composite Video & Audio Input For Any Video Device (only video will go into the OEM navigation / multimedia system, audio is only for output switching)
AV OUT	Will output the audio and video from AV1 or AV2 or AV3 depending on which is currently selected.
REAR VIEW CAMERA	This composite video connector will accommodate a rear video camera that features an NTSC composite output. This input is trigger-able with the "LAMP RV" wire, so when the vehicle goes into reverse, this input is displayed.
VGA IN	This connector allows the connection of a Car PC / Computer. The resolution of the

	VGA output on the Car PC should be set to 640x480 at 60hz
REMOTE IR	Infra red eye that allows that will be mounted somewhere in the dash.
RED WIRE	12V DC Input
BLACK WIRE	Ground
BLUE LAMP/RV	Reverse trigger. When 12V DC is applied to this wire, the REAR VIEW CAMERA INPUT will automatically be displayed on the screen. This is often used for a reverse camera setup.
GREEN WIRE	Parking brake ground. Safety ground. This wire must be grounded for video in motion to work.
YELLOW IDRIVE	Optional i-drive controller connection wire. This is not used unless you purchased a separate i-drive control unit with the video module.

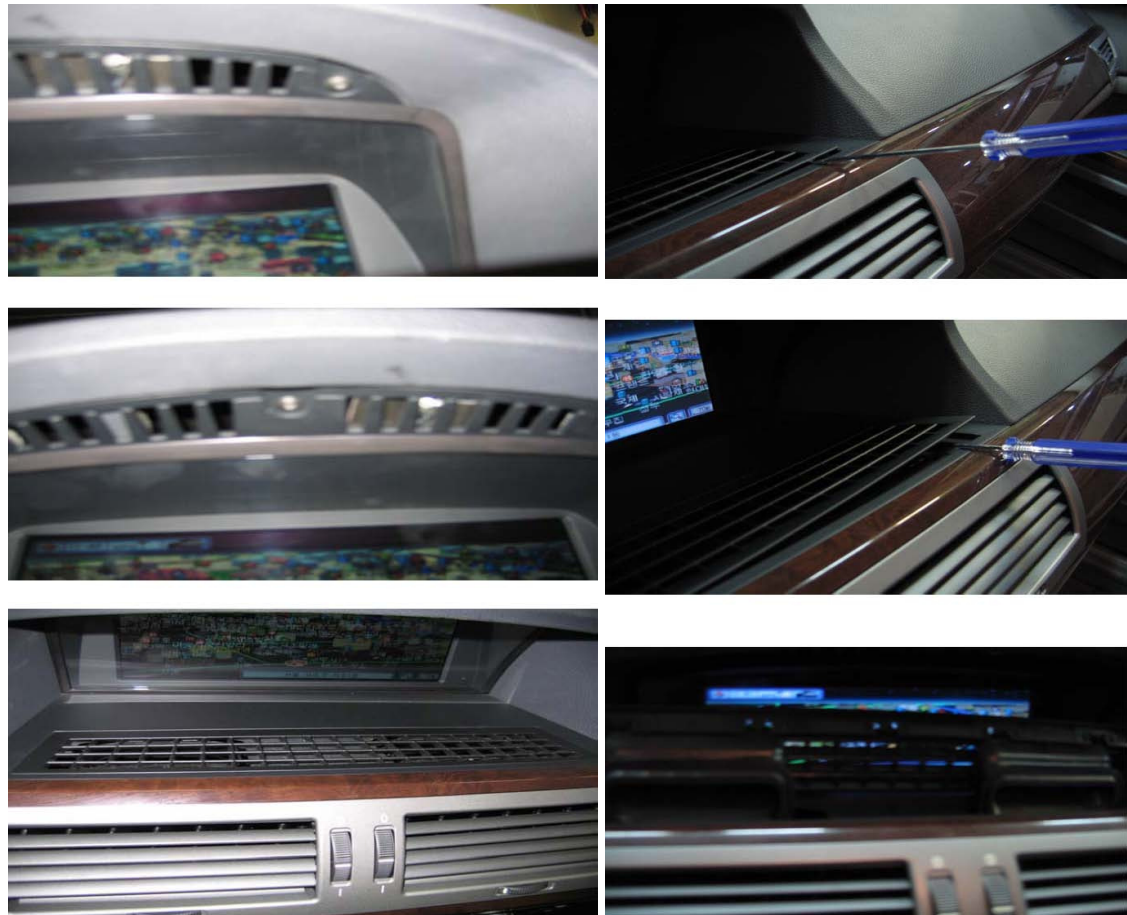
**Audio Input Note:**

This input will **not** connect the audio to your OEM speaker system, the audio inputs are only to allow the right audio output to be selected depending on what video source you have currently selected. The audio output of the module will then reflect this. The audio inputs are just for switching to the output.

**How To Remove The Monitor From The Dash**

There are star shape screws on upper part of the monitor. Using exclusive instrument, loosen the screws and remove the monitor.

Please be careful not to make scars on wood trim when pulling out the monitor. Sometimes it is not pulled out easily as the backside white connector may be caught. Then lift up the dashboard slightly and it may be easily pulled out. There are two connectors on backside of the monitor. White one should be disassembled before the black one. Assembling order is the reverse of that of disassembling.



This is the fixing lock in the side of the monitor.



Press the fixing lock then push it back to separate front and back panel.



Remove the connector between front and backside panel



This is separated backside panel.



It shows separated front panel.



These are back light module and interface connector separated.



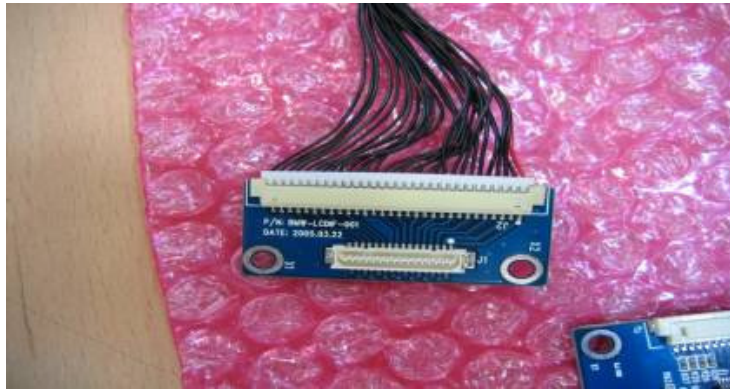
It shows LCD connector



Connect the interface connector with the LCD connector.



Install the joint PCB above DCL connector using double-side tape.



Cut the LCD cover a little bit wider than joint PCB as shown in the picture.



It shows the location of the input connector and connection status.



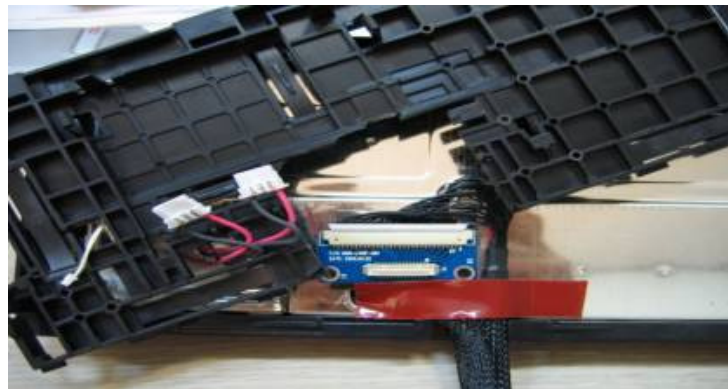
Assemble the LCD cover and then the yellow color film cable.



This is connecting appearance.



It shows the LCD Cover Cutting and the connecting appearance. Left is output and right is input.



Fix the Lock as shown in the picture and then assemble the opposite side.



Assemble the connector between front and backside panel.



Be careful not to damage the cable when assembling. Put unit casing back together. Connect the cable to input and output of the interface respectively. Be careful not to reverse the input and output!

