

# NAV VIDEO

.COM

## IMPORTANT NOTE:

**Technical support** on this product is only available via e-mail. Before submitting a technical support e-mail please thoroughly read through this installation guide and double check your installation.

If you have a technical question please send an e-mail to [support@navvideo.com](mailto:support@navvideo.com). Technical support e-mails will be returned within 2 business days.



## NV\_RGB\_GM4 / NV\_RGB\_GM5

Video Input Module With Wiring Harness – GM Specific Installation

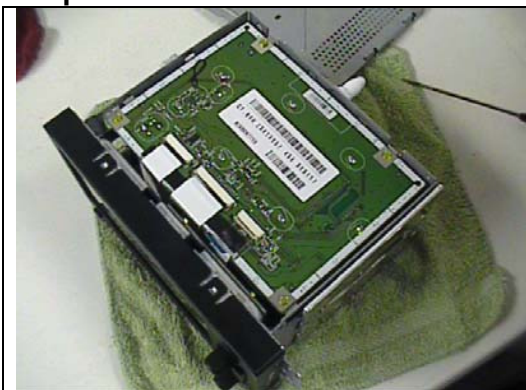
The following is a written instruction set for the installation of the GM Video Interface Cable. After installation, the factory radio will operate normally with all functions active and all screen views available as before. The cable is a simple plug-in assembly which, when connected to the Dual Video Interface Controller Module, makes an on-demand video input available for viewing on the factory screen. For installation in GM Touch Screen Navigation and Non-Touch Screen Navigation radios, a small cable must be inserted into a location under the lower panel of the radio. This instruction set will provide details on how to perform this simple addition. A video presentation is also available which will allow you to view the entire cable installation process as performed by a stereo installer.

**Tools Necessary:**

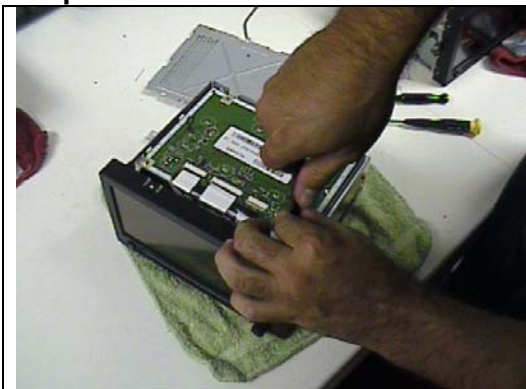
- Small Screwdriver
- 5 MM Socket or Wrench

**Estimated Time:**

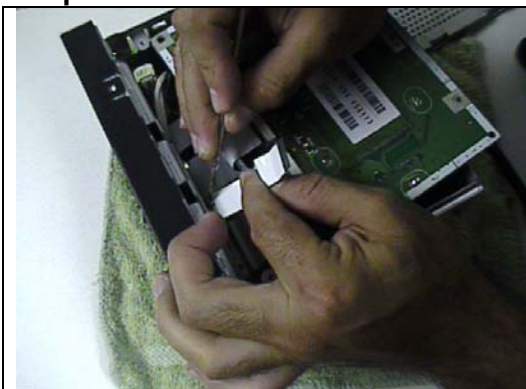
- Less than 15 minutes

**Step 1.**

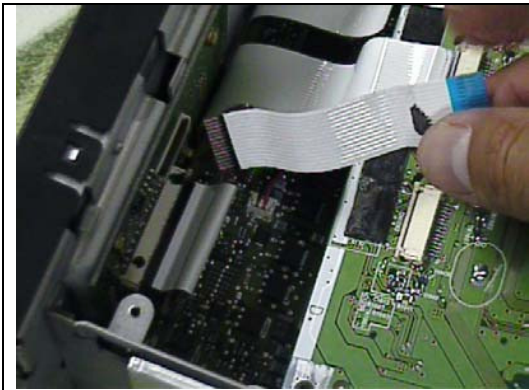
Begin by removing the radio from the car and placing it upside down on a soft cloth. Next, remove the lower cover plate. The lower cover plate is not held on by any screws and can be removed by lifting up the rear edge with your small screwdriver and pulling it free. This will expose the circuit board located underneath.

**Step 2.**

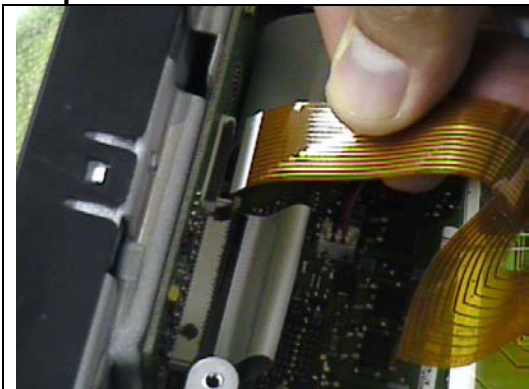
Using your 5MM socket or wrench, remove the 4 screws located on the outside corners of the exposed printed circuit board. The 4 screws are removed to simply give you a little more room to take out a small factory cable and replace it with the GM Video Interface Cable provided. After removing the screws, slide the board rearward a small amount to allow a clearer view of the front cables.

**Step 3.**

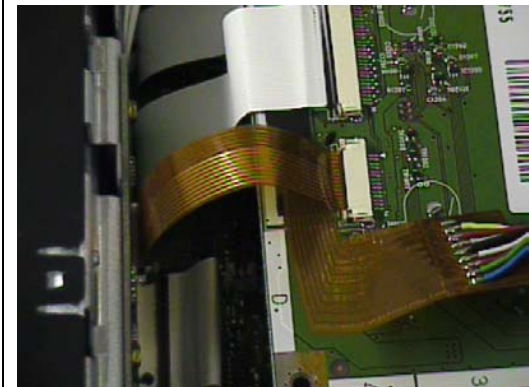
Looking from the rear of the unit, remove the small cable on the front left corner of the board. Begin by examining the cable and it's connections on the main board and the front panel. On the main board, the cable is inserted into a small connector which has a locking bar on each side. Slide each side of the locking bar forward to release the cable and allow it to be pulled free from the connector. The other end of the cable is inserted down into a small connector on the front panel. This connector does not have a locking tab. To remove the cable simply pull it upward and out of the front connector. Sometimes a small amount of adhesive may be present from which the cable must be pulled free from to allow the removal.



**Step 4.**



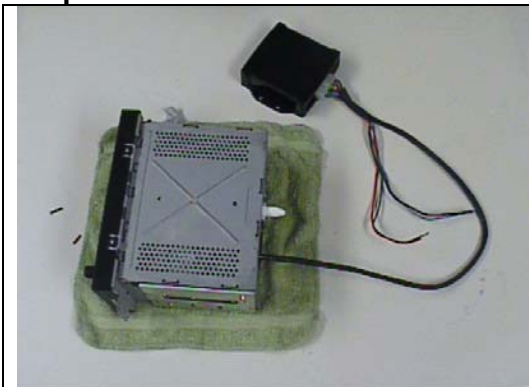
Front Connector



Rear Connector

Now it is time to replace the cable with the one provided in your Video Interface Kit. Bring out the cable and orient it to the pictures below. Insert the front cable into its location in the connector on the front panel first. Carefully line it up and insert it fully into the connector. Make sure that it is fully inserted and straight. Next, insert the other end of the cable into the connector on the main board. Make sure the side locking tabs are extended before attempting to insert the cable. With the locking tabs pulled forward slightly, insert the cable fully and straight into the connector. Capture the cable in place by sliding the side tabs of the connector rearward and relocking them on each side of the main board connector.

**Step 5.**



This completes the installation of the Video Interface Cable. Reassemble by positioning the main board and reinstalling the four screws. Adhesive tape has already been placed on your Interface Cable and should now be used to attach the cable to the main board and hold it in place. Position the black cable out the slot in the left rear edge of the radio so that it will not be in conflict when the cover is put back on. Use a piece of the adhesive tape provided to hold down the black cable near the opening in the back of the radio. Place the front edge of the metal cover plate into position against the front edge of the radio and then lower it back into place, pressing it back into position along the sides and rear edge. The folds in the video cable along the front edge of the radio will simply bend over without harm as the cover is being replaced.

Make your connections to the Video Interface Cable for 12 Accessory Power, Ground, and also connections for Reverse



Light and Parking Brake if desired. Plug the Interface Cable into the Dual Video Controller Module and prepare for finalizing the installation. Some installations will use a remote keypad for selection and adjustments of picture attributes. Others may need to make picture adjustments manually using controls present on the Control Module before fully installing the radio. For most installations, the Controller Module will conveniently fit behind the radio to the upper right.